



In This Issue:

BERARD
SINCE
1945

The Mega Transport Experts

- > The SSSB Sequel | 4000 Ton SSSB Module Transport
- > Power Up! | The Transformer Project
- > Berard @ LHS Career Day
- > Team Member Spotlight | Trey Breaux

The SSSB Sequel 4000 Ton SSSB Module Transport



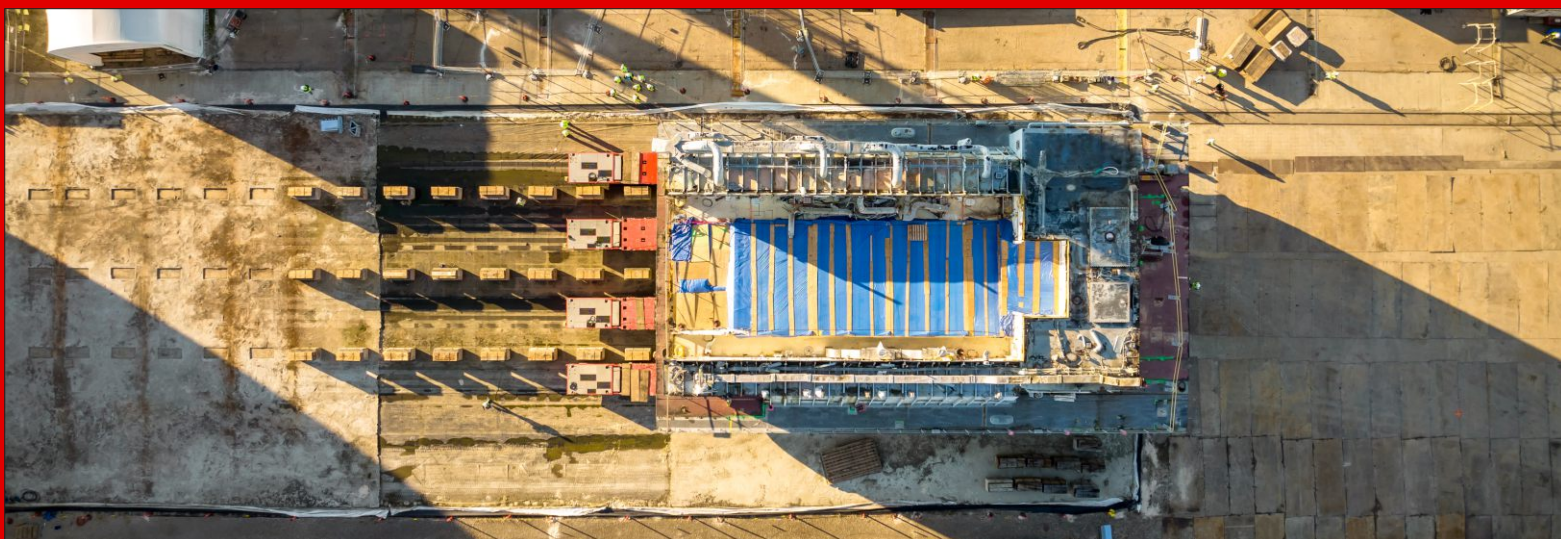
Job Specs

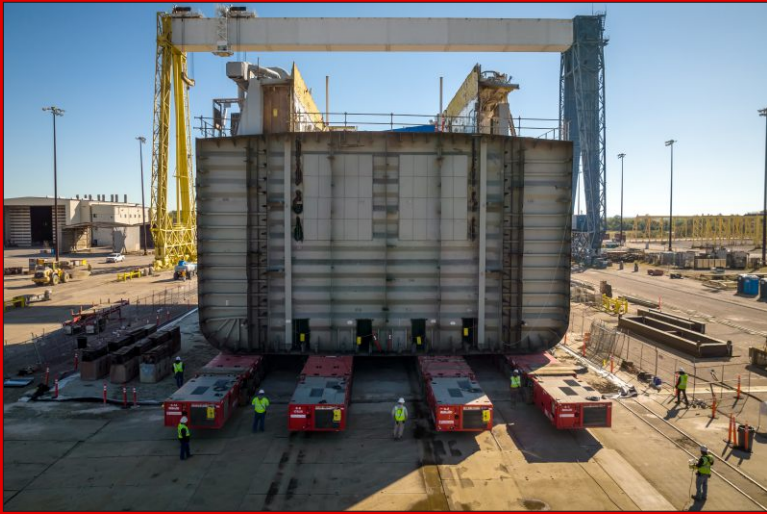
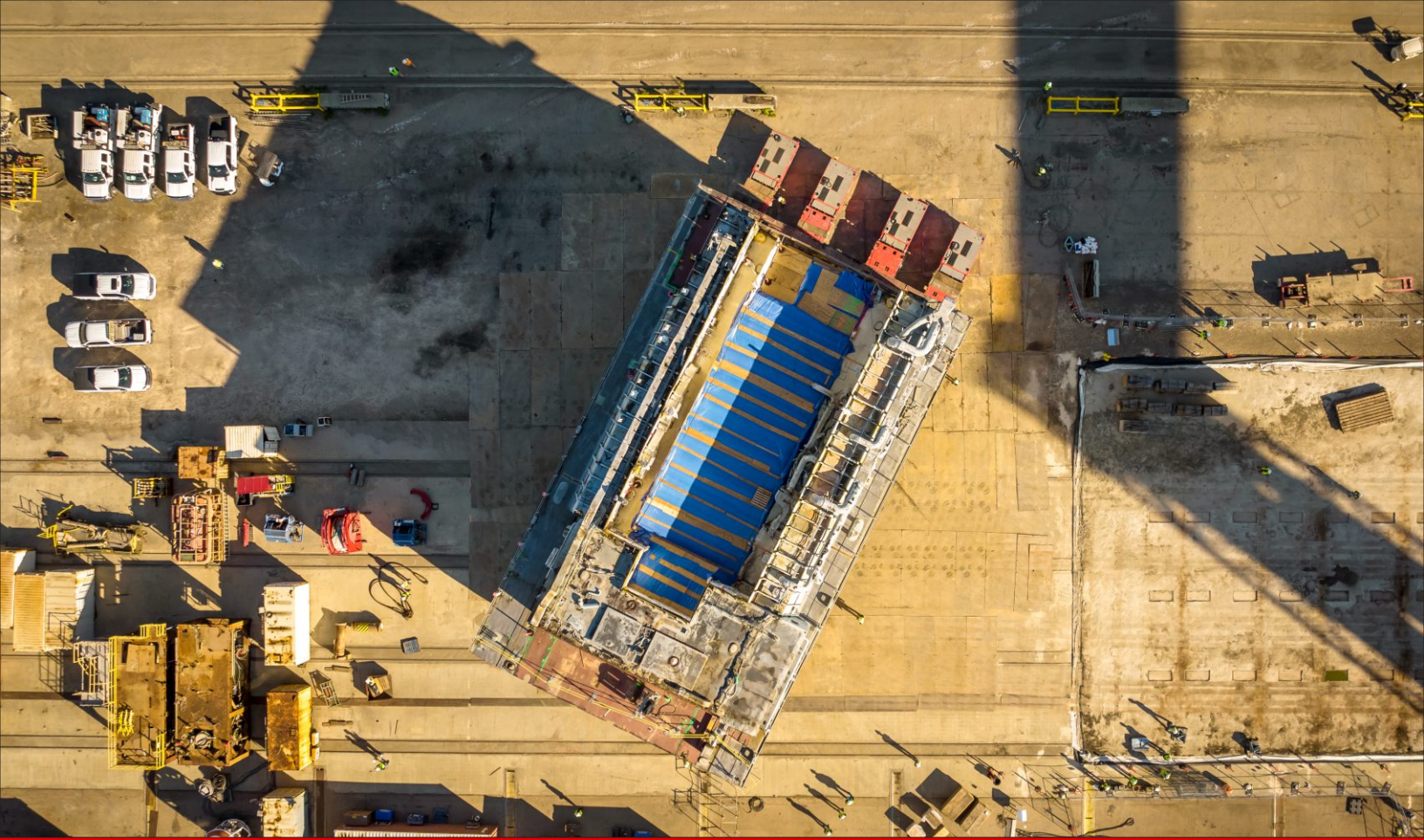
Weight:
4,000 Tons

Dimensions:
118'L x 68'W x 61'H

Equipment Used: 112 axle lines of SPMTs, 4 power packs, laminated mats and steel plating

In April of 2021, the Berard team was commissioned to transport a Surface Ship Support Barge (SSSB) from Newport News shipyard in Norfolk, VA to a dismantling site in Mobile, AL. Once the SSSB arrived dismantling commenced. Now with only the main structure remaining, Berard was once again tasked with relocating the SSSB main structure to a new work area within a containment tent. The team used 112 axle lines of SPMTs to move the massive 4,000 ton behemoth forward, then rotate it 180 degrees for the desired orientation for transport into the tent. Steel plating for ground support was used as the structure was moved across the shipyard. Our team did a phenomenal job and their dedication to getting it done safely and on time was well appreciated! Congrats team Berard!







Power Up! The Transformer Project



Job Specs

Weight: Up to 302,033 lbs.

Dimensions:

Up to 28'-4" L x 19'-3" W x 12'-8" H

Equipment Used:

BTI 1945 220' x 43' deck barge,
(2) 12 axle hydraulic platform
trailers, (2) prime movers, barge
ramps, ballast pumps, 8 axle line
SPMT, 300 ton skid system and
unified jacking system

The Berard team recently delivered two electrical transformers to a solar farm project near Baton Rouge, LA. Berard engineers determined a barge option to an industrial facility would be the most cost effective method to shorten the road portion of the move. Berard utilized the company owned BTI 1945 deck barge from the port of entry, then rolled off to dock using a 12 axle hydraulic platform trailer. Once on dry land, both transformers were moved to site simultaneously on a 30 mile route and transferred to an 8 axle SPMT. Both units were slid over their foundations and set in operating position using hydraulic jacks.





Berard @ LHS Career Day



The Berard team participated in the Loreauville High School Career Day recently. The event was a huge success with many students visiting the Berard booth and some even aspiring to be future Berard team members! The event was held to get students interested in their future and with several companies exhibiting from a wide array of sectors, there was no shortage of possibilities.

Berard is a proud supporter of our community and our youth. The future looks bright for these students and you never know, you just may see some of them on our team in the future!



Trey Breaux

CAD Draftsman



Trey Breaux became part of the Berard team in December of 2020 as part of our CAD drafting department. He does a great job and he's a team player that helps the design team anyway he can.

When asked what aspects of the job he enjoys Trey said "I like the problem solving aspect of the job. I enjoy the fellow employees I work with."

When not turning out drawings Trey enjoys golfing, hunting, and fishing. Trey is married to Sarah and they have two daughters; Haddie and Ruthie.



Happy Birthday!

Happy Birthday to These Dedicated Team Members!

Elle Berard
Ravis Belaire
Dylan Landry
Brianna Meaux

Harley Mitchell
Connor Pelous
Danny Pontiff
Kerry Rachal